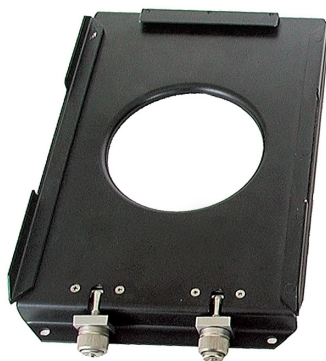


Telephone frame



PN (RN): 2200.750.01 NSN: 5975160018704

The attachment frame is made of steel sheet and lacquered with black paint. The frame is attached to a horizontal/vertical plate by bolts or screws and the telephone cabinet is mounted on it. The cabinet is secured by a lever quick-lock. The frame design thus provides for quick mounting and removing of the telephone without using any tools.