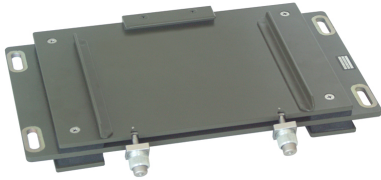


Mobile set frame



PN (RN): 7007.100.14 NSN: 5975160055891

The frame is designed for installation of the RF2050 mobile EPM transceiver in all wheeled and tracked vehicles. The transceiver is attached in the spring-mounted frame using quick-clamping nuts. The frame is attached to the vehicle using four M8 screws in the frame base corners.